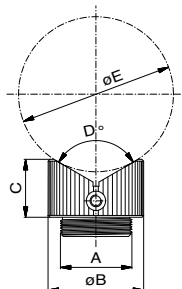


### V block 120°

with ball joint

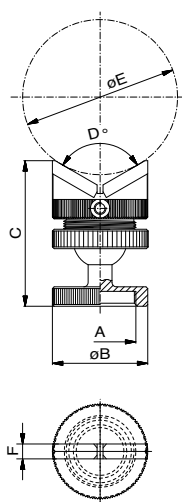
Nr.	A	B	C	D	E	
80733	M24x1	32	49	120	max. 52	58



### V block 120°

without ball joint

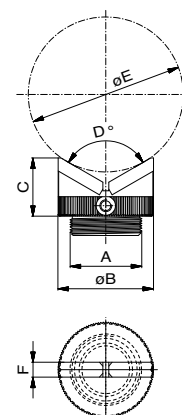
Nr.	A	B	C	D	E	
22286	M24x1	32	19,4	120	max. 52	34



### Knife 120°

with ball joint

Nr.	A	B	C	D	E	F	
80927	M24x1	32	49	120	max. 56	5	42



### Knife 120°

without ball joint

Nr.	A	B	C	D	E	F	
22631	M24x1	32	19,5	120	max. 56	5	19