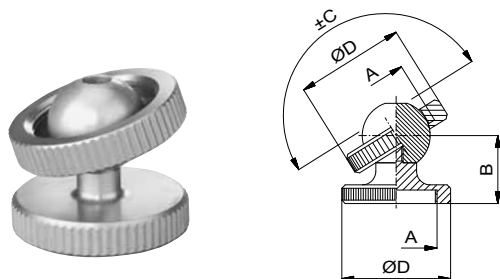
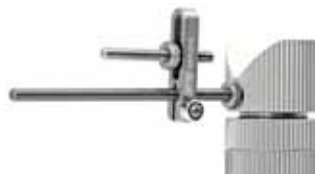


Stop M4

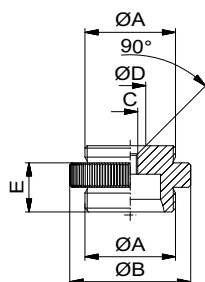
for V-piece

Nr.	A	B	C	D	g
285200	92	36	8	M4	12



Ball joint

Nr.	A	B	C	D	g
80947	M24x1	22	55°	32	24
81588	M12x0,5	10	55°	16	6



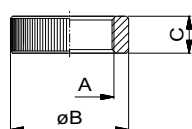
Crossover

male/male, for ball joint

Nr.	A	B	C	D	E	g
22647	M24x1	32	M4	8,2	13	21
24241	M12x0,5	16	-	-	5	12



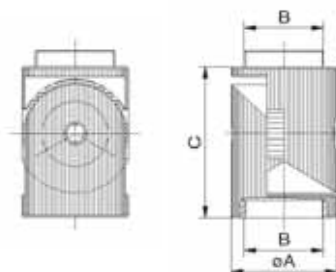
M4 thread can be connected with studs from FX range as location pin



Spacer

M24x1

Nr.	A	B	C	g
22644	M24x1	ø32	10	10



Joint for Screw-jacks

with knurled serrations grid 6° or 4°

Nr.	A	B	C	Grid	g
285206	32	24x1	40	4°	94
285207	42	32x1	60	6°	232