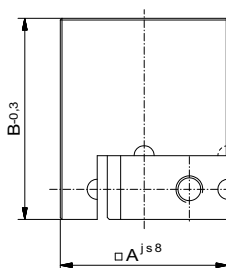


### 3D Shim block base, face mounting

including coupling, complete with shims and screws

Nr.	B (AF)	A x A	g
92226	25	50x50	203
92227	40	80x80	778
92228	50	100x100	1.485
92229	25	75 x 75	456
92230	40	120 x 120	1.750
92231	50	150 x 150	3.341

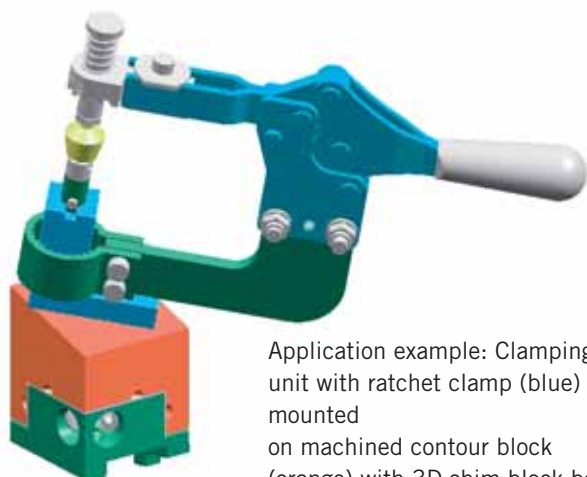


### Contour block

for 3D Shim block

Nr.	B (AF)	A x A x B	g
34768	25	50x50x65	356
34769	25	50x50x90	536
34770	25	75x75x65	866
34771	40	80x80x104	1.879
34772	40	80x80x144	2.227
34773	40	120x120x104	4.871
34774	50	100x100x130	2.926
34775	50	100x100x180	5.833
34776	50	150x150x130	6.900

Other dimensions on request



Application example: Clamping unit with ratchet clamp (blue) mounted on machined contour block (orange) with 3D shim block base

