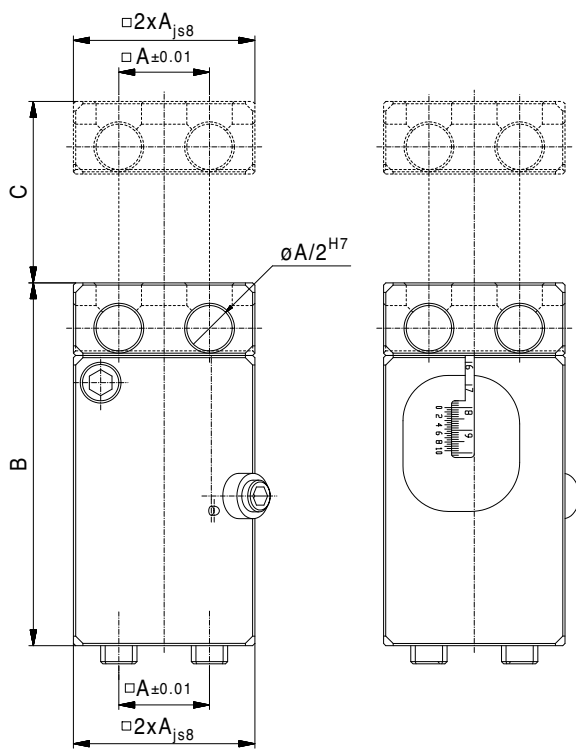




ALUFIX Jacks


Alufix jacks are used to position and level different sized parts for measuring.

These operator-friendly jacks are configured according to application and customer requirements.



Rack gear jack

with height adjustment using a gear jack, vernier 0,05mm

Nr.	A (AF)	B	C	max. load	
82060	25	100	20	30 kg	570
81871	25	150	75	30 kg	800
82829	40	280	140	45 kg	2.314
90539	50	300	150	60 kg	1.715

